



〒760-0020 香川県高松市錦町1-11-1 TEL:087-823-7700
Anabuki Business College Japanese Courses Tel:+81-87-823-7700
1-11-1 Nishiki Machi, Takamatsu-shi, Kagawa Prefecture 760-0020, Japan
Home Page: <https://ana.anabuki.ac.jp/japanese/jp/>
Email: 123@anabuki.ac.jp
(Feel free to email us in English, Chinese, Korean, Vietnamese or Japanese)
<https://www.facebook.com/anabukicollege.ajk/>



〒720-0801 広島県福山市入船町2-2-3 TEL:084-973-3448
Anabuki Mirai International College Japanese Courses Tel :+81-84-973-3448
2-2-3 Irifune cho, Fukuyama-shi, Hiroshima Prefecture 720-0801, Japan
Home Page: <https://ana.anabuki.ac.jp/japanese/jp/>
Email: fukuyama-nihon-go@anabuki.ac.jp
(Feel free to email us in English, Chinese, Korean, or Japanese)
<https://www.facebook.com/Anabukijapaneseinfukuyama/>



〒770-0852 徳島県徳島市徳島町2-20 TEL:088-653-3155
Tokushima Anabuki College Japanese Courses Tel: +81-88-653-3155
2-20 Tokushima cho, Tokushima-shi, Tokushima Prefecture 770-0852, Japan
Home Page: <https://ana.anabuki.ac.jp/japanese/jp/>
E-mail: t-nihon-go@anabuki.ac.jp
(Feel free to email us in English, Chinese, Korean, or Japanese)
<https://www.facebook.com/anabukicollege.japanese.tokushima/>

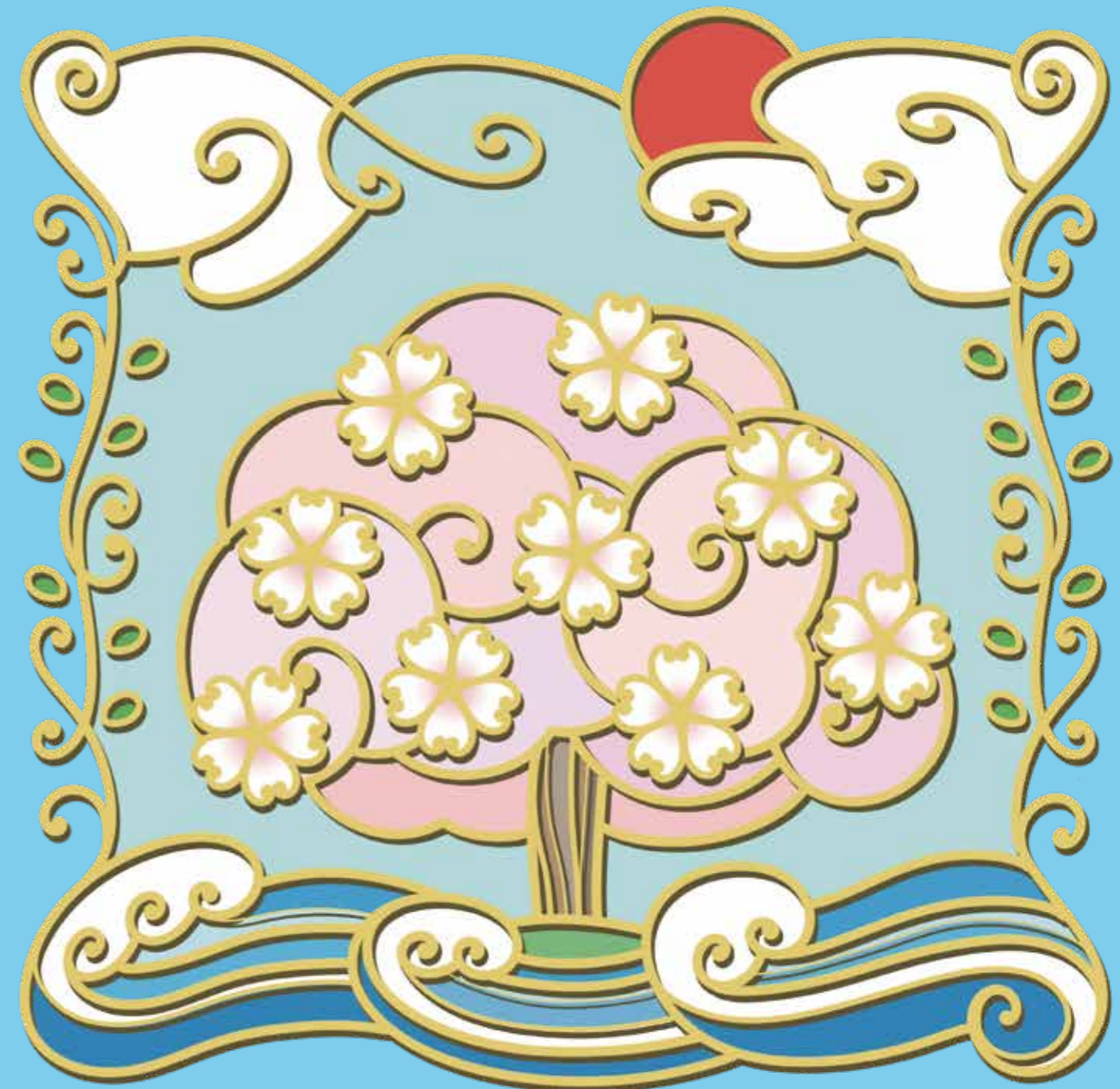


Website

ANABUKI COLLEGE

JAPANESE COURSES

Since
1992



 anabuki college group

穴吹ビジネスカレッジ 日本語学科

TAKAMATSU

穴吹国際みらい専門学校 日本語学科

FUKUYAMA

徳島穴吹カレッジ 日本語学科

TOKUSHIMA

GREAT LOCATIONS

Anabuki College Japanese Courses has grown more than 2,000 international students since its opening in 1992. Currently, many students are studying Japanese in Takamatsu, Fukuyama and Tokushima campuses. With the warm Seto Inland Sea, less disasters, an educational environment, and a low cost of living in local cities, we support your study abroad from both the educational and the living aspect.



In 2020, Takamatsu is the only destination in Japan selected and announced by the world's largest travel booking site, Booking.com as one of the TOP10 must-visit places. The Setouchi International Art Festival, which is held once every three years, attracts many visitors from Japan and abroad, and has been highly evaluated as an art festival worldwide.



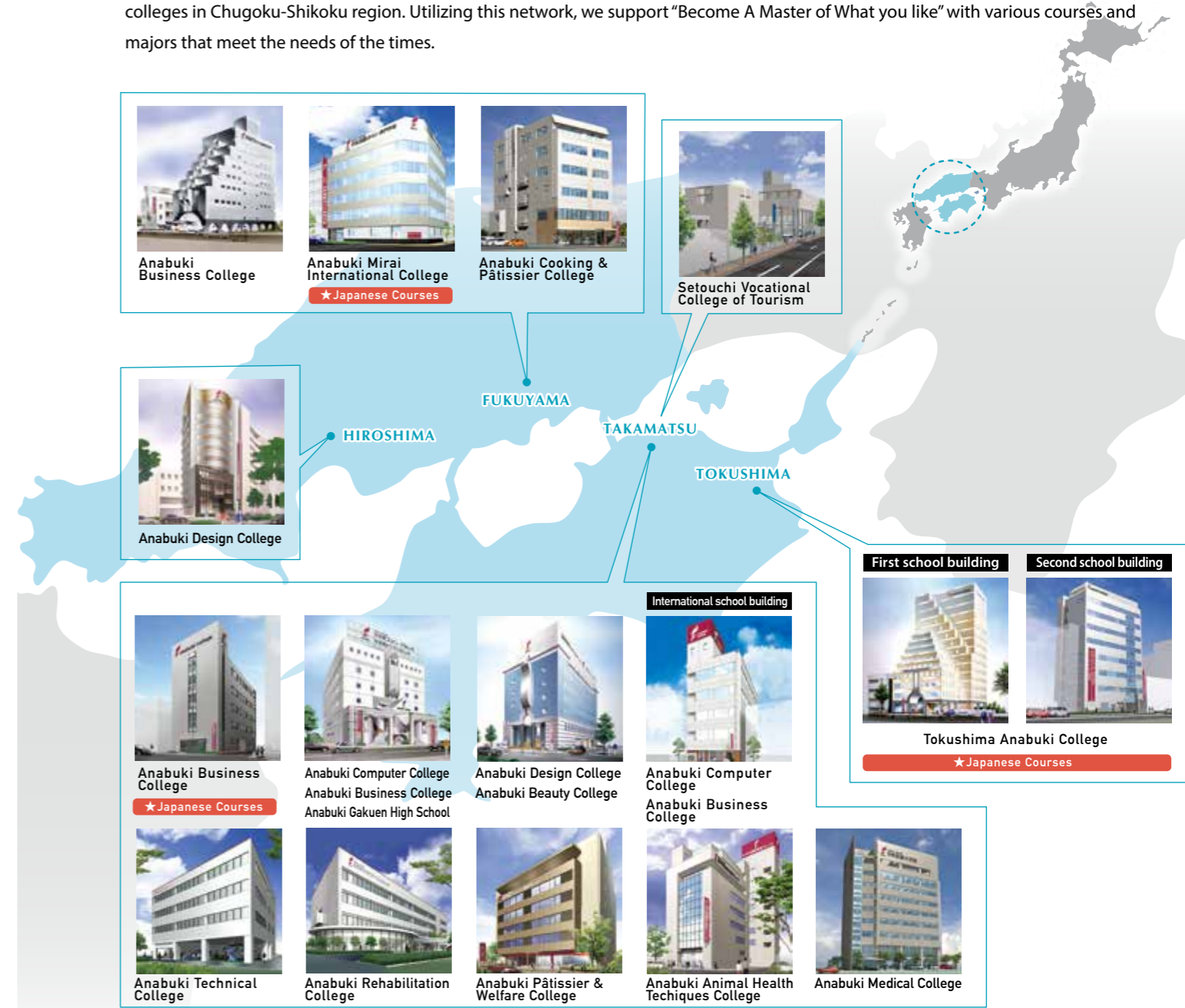
Fukuyama is a major economic, cultural and transportation city in the Shikoku and Chugoku regions, with easy access to Tokyo and Osaka by bullet train. In addition, many companies are located mainly in the manufacturing industry; there are many jobs; prices are cheaper than Tokyo, and security is good, so it can be said that it is a city that is easy to live in.



Tokushima has long developed as a commercial city, with the Kii Suido in the east, green mountains in the south, and many rivers flowing in the city. Awa Odori, held in summer, is visited by tourists from all over the world. In recent years, it has also attracted worldwide attention as a city where anime culture has developed.

THE LARGEST EDUCATIONAL GROUP IN MID-WESTERN JAPAN

Anabuki College Group is a comprehensive educational group that develops junior colleges, vocational schools, high schools, and colleges in Chugoku-Shikoku region. Utilizing this network, we support "Become A Master of What you like" with various courses and majors that meet the needs of the times.



President's Message

Tadatsugu Anabuki, President, Anabuki College Group

Thanks to the remarkable development of today's global networks, the distances between Japan and the rest of the international community are quickly shrinking. We are very pleased to be a part of this development, has welcomed students from 41 countries into our Japanese language program since its inception. Our college group is now the largest in mid-western Japan, and offers advanced training in computers, business, design, cosmetics, and many other professional fields. I sincerely wish that you will decide to learn with us, and then use your professional skills to contribute to our ever-expanding global community.

Features

Learning Japanese

Our school's Japanese language curriculum includes learning about Japanese culture, social norms, and lifestyle practices in addition to the four language abilities of "reading, writing, listening, and speaking."



You can learn Japanese culture as well!



Konpiragu Shrine
(Takamatsu School Field Trip)

Higher Education Admission • Job Hunting Support

We'll help you get a job and continue your study when you graduate from the Japanese language program. In line with your desired career path, we will help you. For instance, we can introduce you to the school you want to enroll, offer guidance on the preparation of the application form and job interview, joining a job fair, etc.



Anabuki College Group
Job Fair



Career Guidance

Guaranteed to pass!



International Exchanges

You can study and socialize with students from many countries and regions at Anabuki College Group. Also, there are chances to meet Japanese individuals through classes and community functions.



International Exchanges



Exchange class with Japanese high school students



Exchange class with Russian short-term interns



※As of September 2022



Onomichi
(Fukuyama School Field Trip)



Naruto
(Tokushima School Field Trip)

No need to worry!



Part-time job Support

Don't be worried if you don't speak Japanese well; the staff in charge will assist you in finding a part-time job. Having a part-time job might help you learn Japanese as well as Japanese customs and rules. Start with a part-time job if you wish to find work in Japan.



Job Interview Practice



Resume Writing Guidance




Low cost of living

The cost of living is lesser than that in Tokyo which makes it a more livable environment for the students.

Housing Fee	Average Living Cost	Commuting Cost
Tokyo	Tokyo	Tokyo
40,000~yen/month	155,000~yen/month	5,000~yen/month
Anabuki College	Anabuki College	Anabuki College
12,500~yen/month	60,000~yen/month	0 yen/month

Various Scholarship Programs

Various scholarship programs are available.

Scholarship name	Screening Period	Amount	Duration	Scholars
Kinue Tadatsugu Anabuki Educational Foundation	Before Admission	20,000 yen/month	1 year	 October 2020 Enrollee Vietnam
Sunahara Children's Fund Study Scholarship	After Admission	30,000 yen/month	1 year	 October 2020 Enrollee Indonesia
Monbukagakusho Honors Scholarship for Privately-Financed International Students	After Admission	40,000 yen/month	1 year	 October 2020 Enrollee South Korea

※The above are some of the scholarships available. As availability varies depending on the admission period and school, please contact us for further details.

TUITION AND FEES

Course Introduction

	Japanese Course - 1 Year <small>Only for Takamatsu and Tokushima campus</small>	Japanese Course - 1.5 Year	Japanese Course - 2 Year
Course Terms	from April to the following year's March	March of the year after next	March of the year after next
Total Study Hours	800 hours / 36 weeks	1200 hours / 54 weeks	1600 hours / 72 weeks
No-class days & Holidays	Saturdays, Sundays, public holidays, summer vacation, fall vacation, winter vacation, spring vacation		

	TAKAMATSU	FUKUYAMA	TOKUSHIMA
Admission Capacity	320	150	100

Timetable

A placement test is conducted after enrollment, and Students are divided into morning and afternoon courses depending on their Japanese language ability.

	Morning Course		Afternoon course	
	1st period	8:50 ~ 9:35	1st period	13:20 ~ 14:05
	2nd period	9:35 ~ 10:20	2nd period	14:05 ~ 14:50
	3rd period	10:30 ~ 11:15	3rd period	15:00 ~ 15:45
	4th period	11:15 ~ 12:00	4th period	15:45 ~ 16:30
	5th period	12:05 ~ 12:50	5th period	16:35 ~ 17:20

Admission Requirements

- Applicants must have completed twelve years or more of formal education.(This includes those who will graduate by the time they begin the course).
- Applicants must have passed Level N5 or higher of the Japanese Language Pro-ciency Test or equivalent(Japanese class hours 150 hours).
- Applicants must be physically and mentally healthy, and willing to obey the laws of Japan and school rules.

School Fees

April Admission

Japanese Course - 1 Year <small>Only for Takamatsu and Tokushima campus</small>			Japanese Course - 2 Year				
Payment Date	March 2023	Total 795,000 yen	Payment Date	March 2023	March 2024	September 2024	Total 1,500,000 yen
Application Fee	20,000 yen		Application Fee	20,000 yen	-	-	
Entrance Fee	70,000 yen		Entrance Fee	70,000 yen	-	-	
Course Fees	705,000 yen		Course Fees	705,000 yen	352,500 yen	352,500 yen	
Total	795,000 yen		Total	795,000 yen	352,500 yen	352,500 yen	

October Admission

Japanese Course - 1.5 Year			
Payment Date	September 2022	September 2023	Total 1,147,500 yen
Application Fee	20,000 yen	-	
Entrance Fee	70,000 yen	-	
Course Fees	705,000 yen	352,500 yen	
Total	795,000 yen	352,500 yen	

※Tuition includes lesson fee, textbooks and teaching materials, event expenses, accident insurance premiums, etc.

Caution

- It is our general policy to not return any fee once received. However, if the Applicant is not granted a Certificate of Eligibility, or after receipt of a Certificate of Eligibility a visa is not granted by an overseas Japanese Embassy or Consulate, or a visa is not granted due to reasons such as natural disasters, disputes, wars, infectious diseases and others, the Entrance Fee and tuition will be refunded, but not the Application Fee.
- Should the applicant decline entrance after a Certificate of Eligibility has been granted, tuition will be refunded, but not the Application Fee and Entrance Fee. In this case, the original copies of the Certificate of Eligibility and Admission Permit must be returned to the school.

DORMITORY

All room types are equipped with a kitchen, refrigerator, air conditioner, washing machine and cooking equipment (gas stove, etc..) The school dormitory is located in the center of the city and is easy to go to school by bicycle every day. If sharing the room, the rental fee will be cheaper, that's our advantage in assuring more savings.

Fees [for 1 person (does not include utility costs and maintenance fee)]

Room Type	Monthly Rate	Move in fees (including 3 months rent)
Single	33,000 yen	210,000 yen
2-4 Occupants	12,500 yen ~ 18,000 yen	120,000 yen ~ 134,000 yen

- ※The cost of a single room is the dorm rate at Takamatsu campus. Please contact us separately if you want a single room at Fukuyama or Tokushima campus.
- Monthly rent and occupancy costs vary depending on the area and type of property.
- Move in fees include rent for 3 months, cleaning fee when moving out, fire insurance fee, immobility fee, etc.
- Students can not move out of the dormitory before their graduation. If students move out of the dormitory while studying at the Japanese language course, they will be required to pay all dormitory fees until graduation.

Example: Single

Students Interview

I study and work hard every day to enter a graduate school!

Example: 2 Occupants

Students Interview

We both came to Japan to be a caregiver. We spend busy days, but we will do our best to be a good caregiver.

AFTER JAPANESE COURSES

After graduating from the Japanese language department, students can go on to vocational school within the Anabuki College Group and continue studying in various fields. Additionally, there is/are also a scholarship systems offer for those who proceeds within the school courses.

Titles and Degrees Obtained After Graduation

2-year Vocational School: Diploma
4-year Vocational School: Advanced Diploma
Professional Junior College: Associate Degree (Professional)



※ As of April 2022

Fields you can study at Anabuki College Group (Excerpt)

Professional (Industrial Courses)



Information System Network Security Game Creator Automotive Servicing Architecture

Professional (Commerce/Liberal Arts Course)



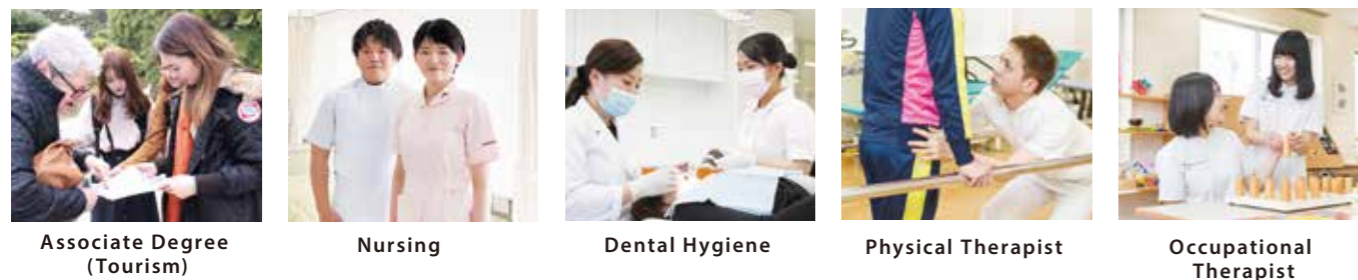
Business Graphic Designer Manga/Animation Esthetics Animal Nursing

Professional (Education/Social Welfare Course, Hygiene Specialist Course)



Caregiver Childcare Cooking Patisserie Beauty Care

Associate Degree (Tourism) Advanced Diploma, Diploma (Medical Course)



Associate Degree (Tourism) Nursing Dental Hygiene Physical Therapist Occupational Therapist

POPULAR COURSES FOR INTERNATIONAL STUDENTS

If you aim to work in Japan, choose Anabuki College !

March 2022
Number of Graduates (Job Applicants) **148** Job Offer Rate **100%**

International IT Engineer Course Aiming to be an IT or Electrical Engineer in Japan!

Class Video

Scholarship

Scholarship Example※ 1
Internal admission benefit + early application special advantage system
First year expenses (Entrance Fee, Annual Tuition, Miscellaneous Fee)
885,000yen → 685,000yen 200,000yen discount

Generalist Vietnam

Technical Work Vietnam

International Business Course Aiming for a job in Japan with business skills in management and marketing!

Class Video

Scholarship

Scholarship Example※ 1
Internal admission benefit + early application special advantage system
First year expenses (Entrance Fee, Annual Tuition, Miscellaneous Fee)
875,000yen → 675,000yen 200,000yen discount

Clerical Job Vietnam

Sales Affairs Vietnam

3-year Automobile Servicing Course Aiming to work in Japan with a high national qualification passing rate!

Class Video

Scholarship

Scholarship Example※ 1
Internal admission benefit + early application special advantage system
First year expenses (Entrance Fee, Annual Tuition, Miscellaneous Fee)
1,027,000yen → 767,000yen 260,000yen discount

Auto Mechanic Nepal

Auto Mechanic Kyrgyzstan

International Hotel Business Course Specialized department for international students to work in Japanese hotels and companies!

Class Video

Scholarship

Scholarship Example※ 1
Internal admission benefit + early application special advantage system
First year expenses (Entrance Fee, Annual Tuition, Miscellaneous Fee)
875,000yen → 675,000yen 200,000yen discount

Front Desk Nepal

Front Desk Nepal

Caregiver Course Learn safe and secure nursing skills to become an emotionally supporting care worker.

Class Video

Scholarship

Scholarship
Caregiver Home Scholarship
Caregiver Educational Fun Loan System
Please contact us for further details such as the amount.

Caregiver Philippines

Caregiver Indonesia

New International Business Basic Course Review Japanese and learn the basics of business and aim for higher education!

Class Video

Scholarship

Scholarship Example※ 1
Internal admission benefit + early application special advantage system
First year expenses (Entrance Fee, Annual Tuition, Miscellaneous Fee)
825,000yen → 625,000yen 200,000yen discount

Starting in April 2023

Basic Japanese

Basic Japanese Computer Exercise

※ 1... Example of scholarships for those who enter our school in April 2023.

LIVING SUPPORT AND PART-TIME JOBS

Anabuki College offers a variety of services to help international students live with peace of mind. You can feel free to consult anything about life, study, part-time job in Japan.



Life Support

Please be assured that the staff will accompany you with difficult procedures such as resident registration, national health insurance and opening a bank account.



Airport Pickup

On the day of immigration, the staff will pick you up at the airport and guide you to the dormitory, so it is safe for the first time overseas.



Visa Support

We help students when they need to renew their visas.



Part-time Jobs

Information about part-time work comes into the college from employers throughout the prefecture. We can help our students find suitable jobs, including assistance writing resumes and interview coaching.

Part-time job average hourly wage

Kagawa Prefecture	Hiroshima Prefecture	Tokushima Prefecture
932 yen	999 yen	919 yen

*From Town work magazine September 2021



Udon restaurant



Izakaya



Yakitori shop



Market



Hotel



Delivery Sorting



Convenience Store



Caregiver

GRADUATES

Working Japan Mold Co., Ltd

From Vietnam A Luoib High School
Career 2018 Anabuki College 2 Year Japanese Course
 2020 Anabuki College International Business Course

Working Anabuki Enterprise K.K.

From Indonesia SMA 14 Tangerang
Career 2018 Anabuki College 1.5 Year Japanese Course
 2020 Anabuki College International Business Course

Working Ryowa House Co., Ltd.

From Nepal SHREE MACHHA PUCHHRE HIGHER SECONDARY SCHOOL
Career 2018 Anabuki College 1.5 Year Japanese Course
 2020 Anabuki College International Hotel Business Course

Working Nichiden Open System Co. Ltd

From India UNIVERSITY OF PUNE
Career 2019 Anabuki College 1 Year Japanese Course

Working Toko Co. Ltd

From Cambodia BELTE International University
Career 2018 Anabuki College 1.5 Year Japanese Course

Working Tokushima Anabuki College

From The Philippines UNIVERSITY OF MINDANAO
Career 2017 Anabuki College 2 Year Japanese Course
 2019 Anabuki College International Business Course

Studying Anabuki College International Business Course

From Bangladesh MODEL GIRL'S COLLEGE SHERPUR
Career 2020 Anabuki College 1.5 Year Japanese Course

Studying Anabuki College Pâtissier & Bakery Course

From Hong Kong Hong Kong Culinary Academy
Career 2019 Anabuki College 1 Year Japanese Course

Studying Anabuki College Automotive Maintenance Course

From Nigeria FEDERAL POLYTECHNIC NEKEDE
Career 2019 Anabuki College 1.5 Year Japanese Course

Studying Anabuki College Caregiver Course

From Nepal NEPAL RASTRIYA SARBODAYA SECONDARY SCHOOL
Career 2019 Anabuki College 2 Year Japanese Course

Studying Anabuki College International IT Course

From Vietnam LY NHAN High School
Career 2018 Anabuki College 2 Year Japanese Course

Studying Graduate School of Management, Kagawa University

From China Xi'an Peihua University
Career 2018 Anabuki College 2 Year Japanese Course

Past academic achievement (excerpt)

Graduate Schools	Universities	Technical Colleges
<ul style="list-style-type: none"> Osaka Sangyo University Kagawa University Kansai University Kobe City University of Foreign Studies Takamatsu University Tokushima University 	<ul style="list-style-type: none"> Aichi University Ehime University Osaka University Okayama University Kagawa University Kanagawa University Kyushu University Kochi University Takamatsu University Nihon University University of Marketing and Distribution Sciences Wakayama University 	<ul style="list-style-type: none"> Anabuki Technical College Anabuki Computer College Anabuki Business College Anabuki Mirai International College Anabuki Culinary & Confectionary College Anabuki Business College (Fukuyama) Tokushima Anabuki College Sundai Business College for Hospitality & Foreign Languages Chuo Computer & Communication College Tsuji Culinary Institute Tokyo International Business College Nippon Engineering College